

## ROTATABLE FAUCET EXTENSION INSTALLATION MANUAL

Manufacturer:  
SEFIS moto s.r.o. Spojovaci 182/11  
Prague 9 190 00 Czech Republic  
info@sefismoto.cz  
made in PRC



## Installation manual

### Mechanical arm faucet installation steps



No.1  
suitable for basins

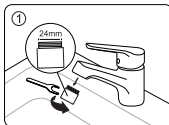


No.2  
Applicable Kitchen

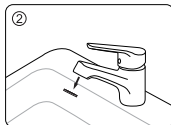


No.3  
suitable for angle valve  
/washing machine faucet

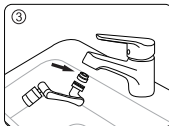
### Basin faucet installation steps



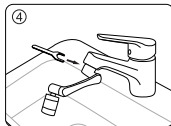
wrench to remove old faucet



take out the original Internal gasket

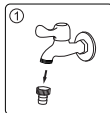


Put in the No. 1 spacer

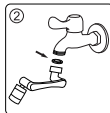


Clockwise Tighten the joint

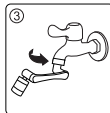
### Washing machine faucet/angle valve installation steps



Remove the old faucet

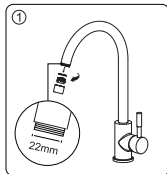


Put in the No. 3 spacer

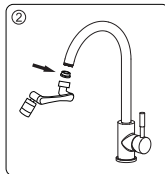


Tighten clockwise

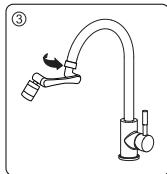
### Installation steps of vegetable basin faucet



Remove the old faucet



Put in the No. 2 spacer



Tighten clockwise

#### Note:

In the case of water leaking around the faucet connection use plumbing tape and make sure the faucet nut is properly tightened. This product is to be used below the maximum water pressure of 0.6 Mba / 60 bar.