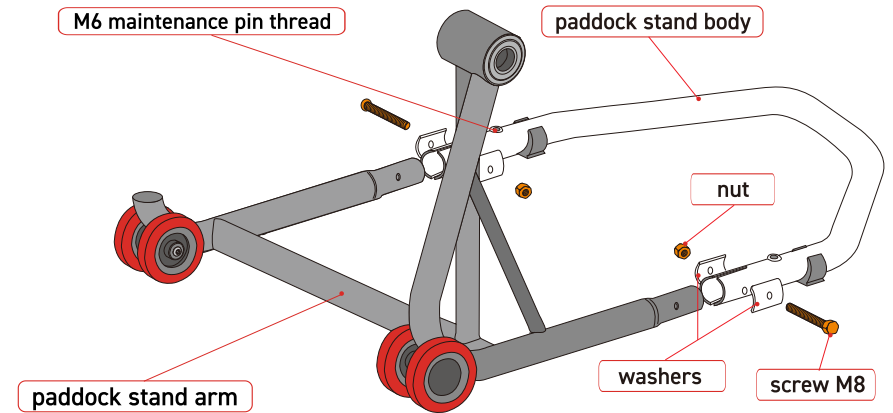


**RIGHT-SIDED****LEFT-SIDED****PADDOCK STAND D22**
LEFT / RIGHT SIDED SWING ARM
PADDOCK STAND
MANUAL EN

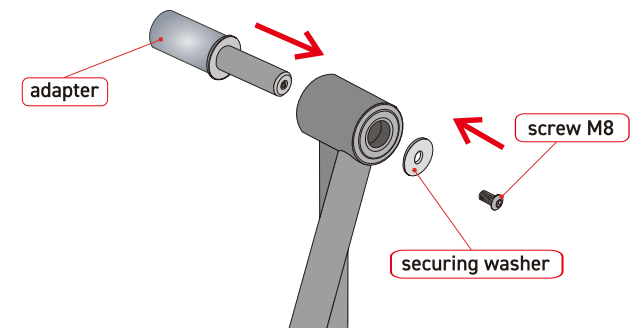
1. Assembly of the paddock stand

The paddock stand is delivered disassembled and some very basic assembly is required. First insert the **paddock stand arm** into the **paddock stand body** and then use the included **washers**, **nut**, **M8 screw** and size 13 wrench (not included) to attach it. Repeat with the other side.



2. Adapter installation

To install **adapter** insert it inside the hole in the paddock stand arm and lock it in place with the **securing washer** and the **screw M8** using size 5 Allen key.



3. Warning

When using two paddock stands always lift rear wheel first and then proceed to lift the front wheel. It is advised to not lift motorcycle alone as the safest use is for one person to hold the motorcycle while another person lifts it using the paddock stand. Prior to the use always inspect technical condition of the paddock stand and the adapter set up. Keep away from children when in use. Maximum carrying capacity of single paddock stand is **200 kg** for maximum motorcycle weight of **400 kg**.